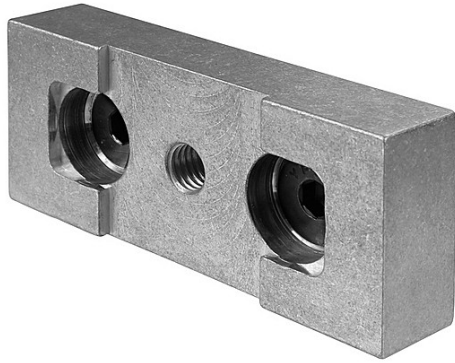


# The Light Source

## CPC Coupler Mount



### CPC Coupler Mount

The Coupler Pipe Mount is CNC machined from 6061T-6 aluminum and fastens to the main body of the Chain Pole Clamp with two 1/2" - 13 flathead socket screws. A Mega-Coupler 1/2CS is then fastened to the Coupler Pipe Mount with an additional 1/2" - 13 flathead socket screw. The Mega-Coupler provides a secure connection for a cross pipe or vertical pipe for hanging lighting or other loads. By using two vertically spaced Chain Pole Clamps each with the Coupler Mount, a 12 foot long pipe could be very securely positioned for lighting or other purposes.

**Order Codes** **CPC-CPA** Bolt On Coupler Adapter, Silver